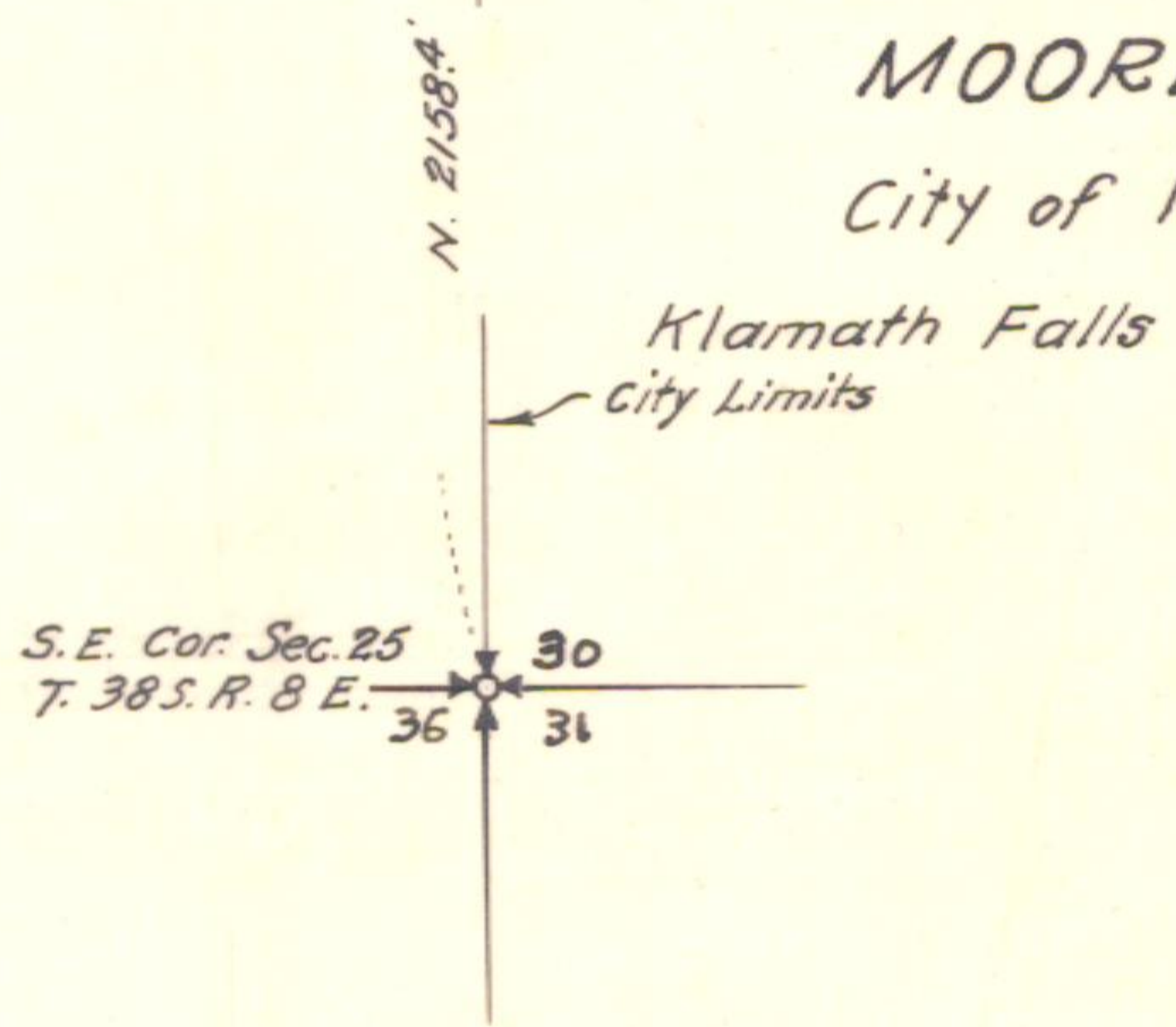


MOORES PARK
OF THE
City of Klamath Falls

T. 38 S. R. 9 E. W. M.



See 1R1-1677 Description to be corrected

OREGON STATE HIGHWAY DEPARTMENT -	
Leased from	City of Klamath Falls
For	Rock Quarry
Highway	Klamath Lake Secondary
County	Klamath
Scale 1" = 100'	Date May 1936