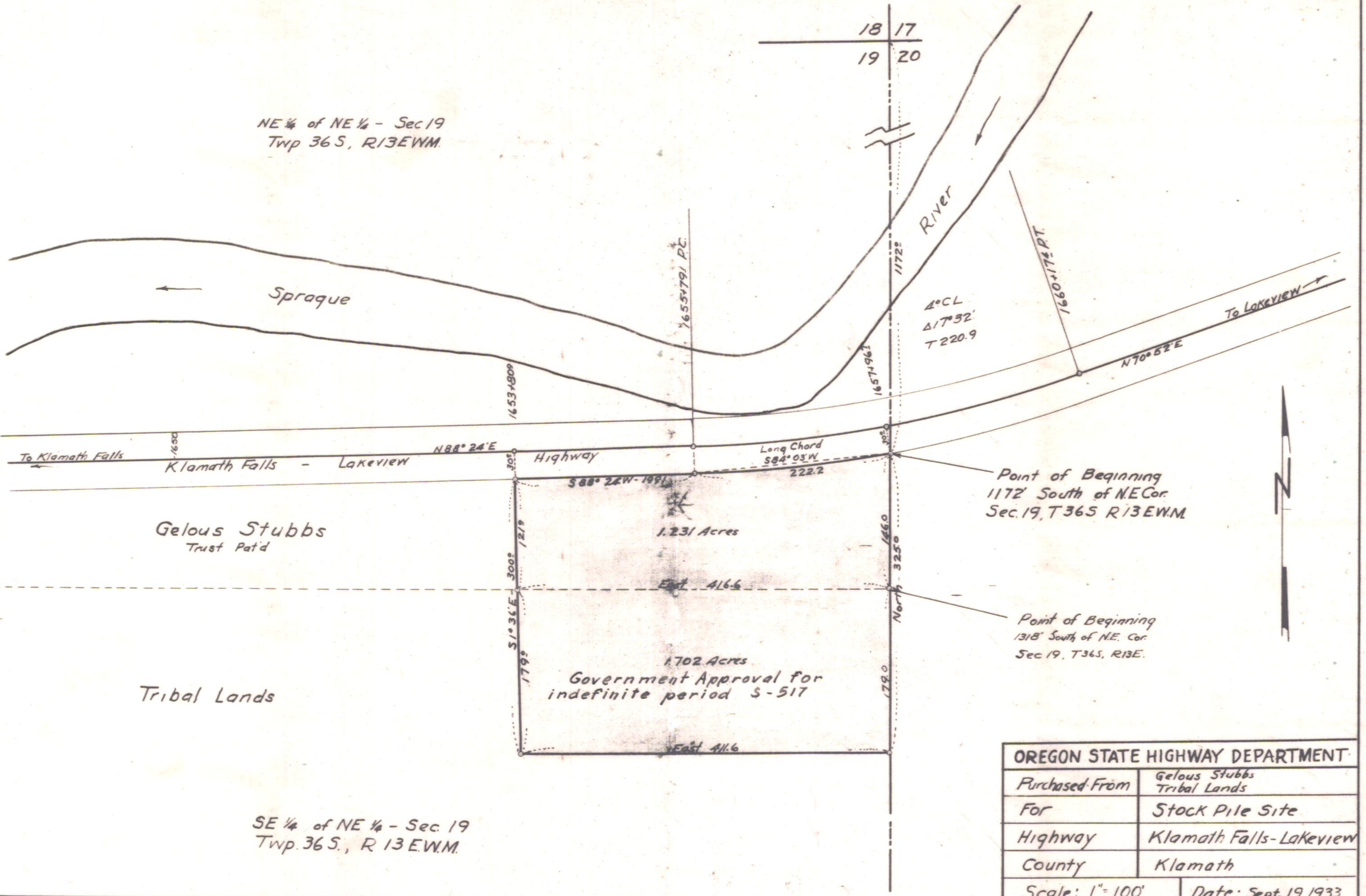


NE 1/4 of NE 1/4 - Sec 19
Twp 36 S, R 13 E W.M.



SE 1/4 of NE 1/4 - Sec 19
Twp. 36 S., R 13 E W.M.

OREGON STATE HIGHWAY DEPARTMENT	
Purchased From	Gelous Stubbs Tribal Lands
For	Stock Pile Site
Highway	Klamath Falls-Lakeview
County	Klamath
Scale: 1" = 100'	Date: Sept. 19, 1933