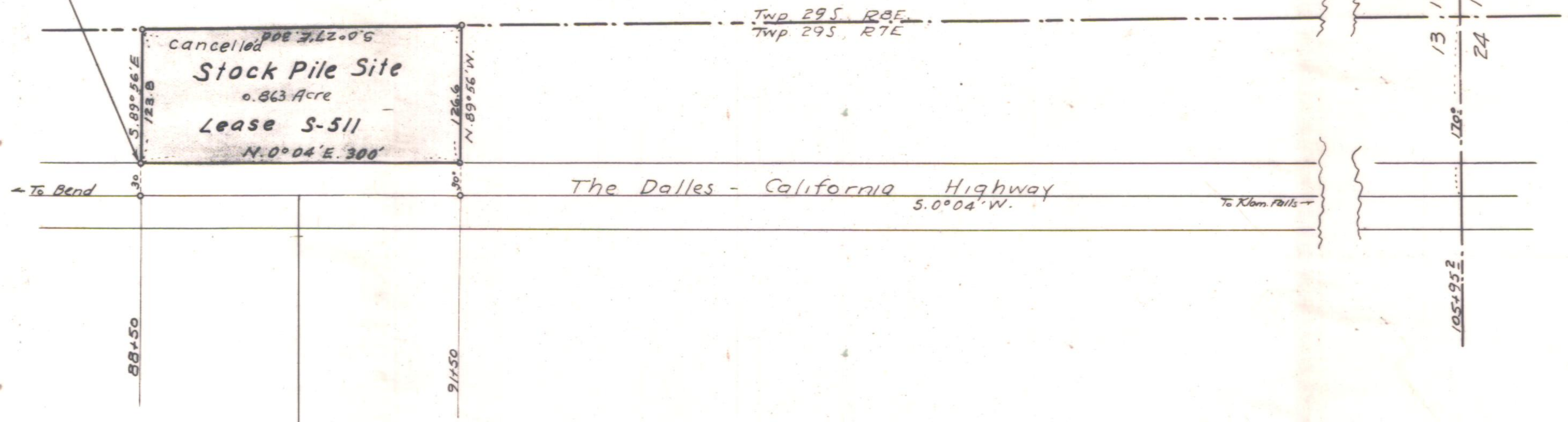




Point of Beginning
17459 N & 108.5 W. of
SE Cor. Section 13
Twp 29 S. R. 7 E. W.M.



← To Bend

To Klam. Falls →

The Dalles - California Highway
5.0° 04' W.

88+50

91+50

M.P.
21881

OREGON STATE HIGHWAY DEPARTMENT	
Acquired From	Tribal Lands
For	Stock Pile Site
Highway	The Dalles-California
County	Klamath
Scale 1"=100'	Date: Nov. 20, 1934

4B-19-15 (400')
4B-17-7 (400')