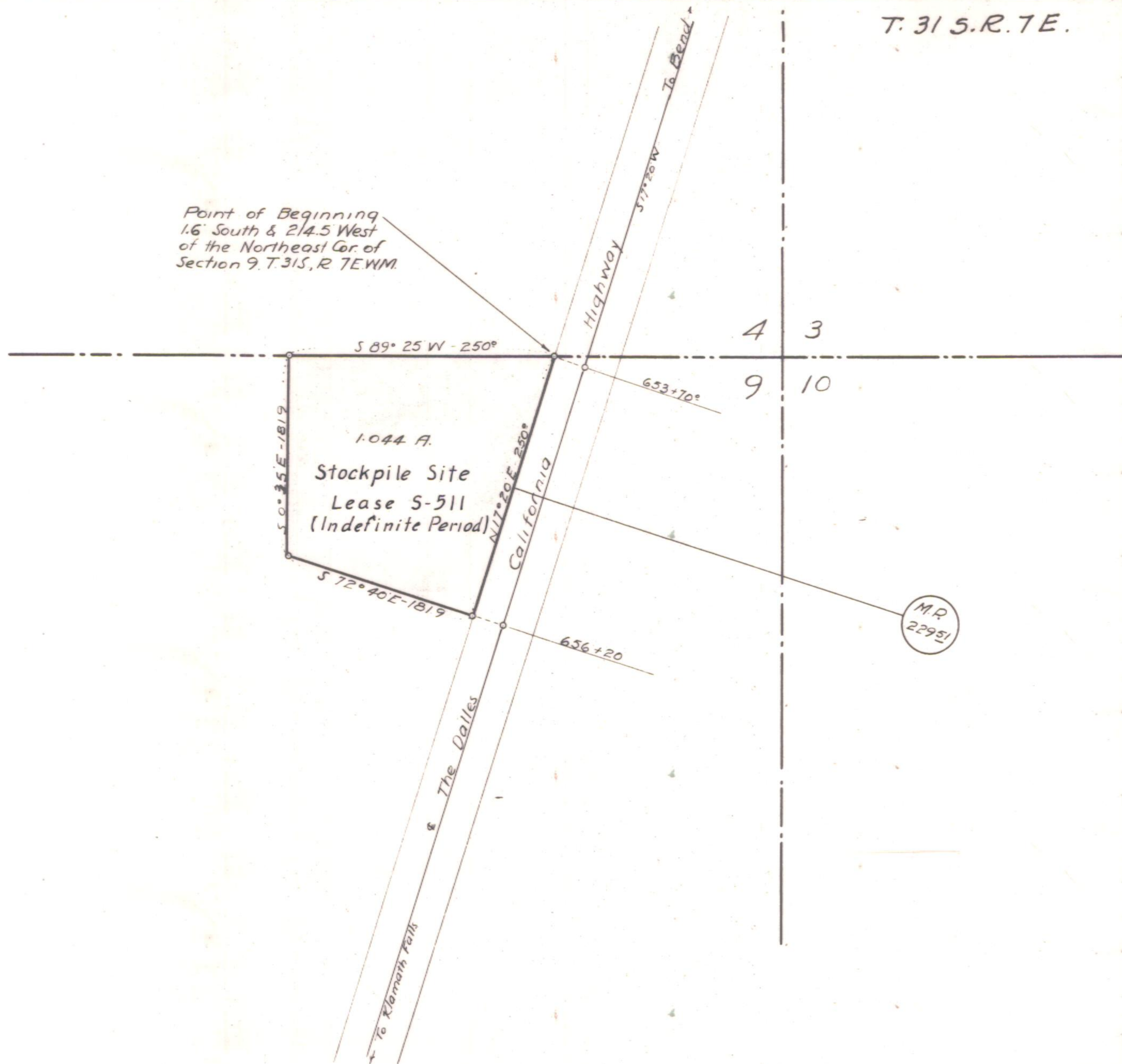


T. 31 S. R. 7 E.

Point of Beginning  
1.6' South & 2 1/4.5' West  
of the Northeast Cor. of  
Section 9, T. 31 S., R. 7 E. W.M.



OREGON STATE HIGHWAY DEPARTMENT	
ACQUIRED FROM	TRIBAL LANDS
FOR	STOCK PILE SITE
HIGHWAY	THE DALLES-CALIFORNIA
COUNTY	KLAMATH
SCALE 1"=100'	DATE - NOV. 20, 1934

4B-19-15