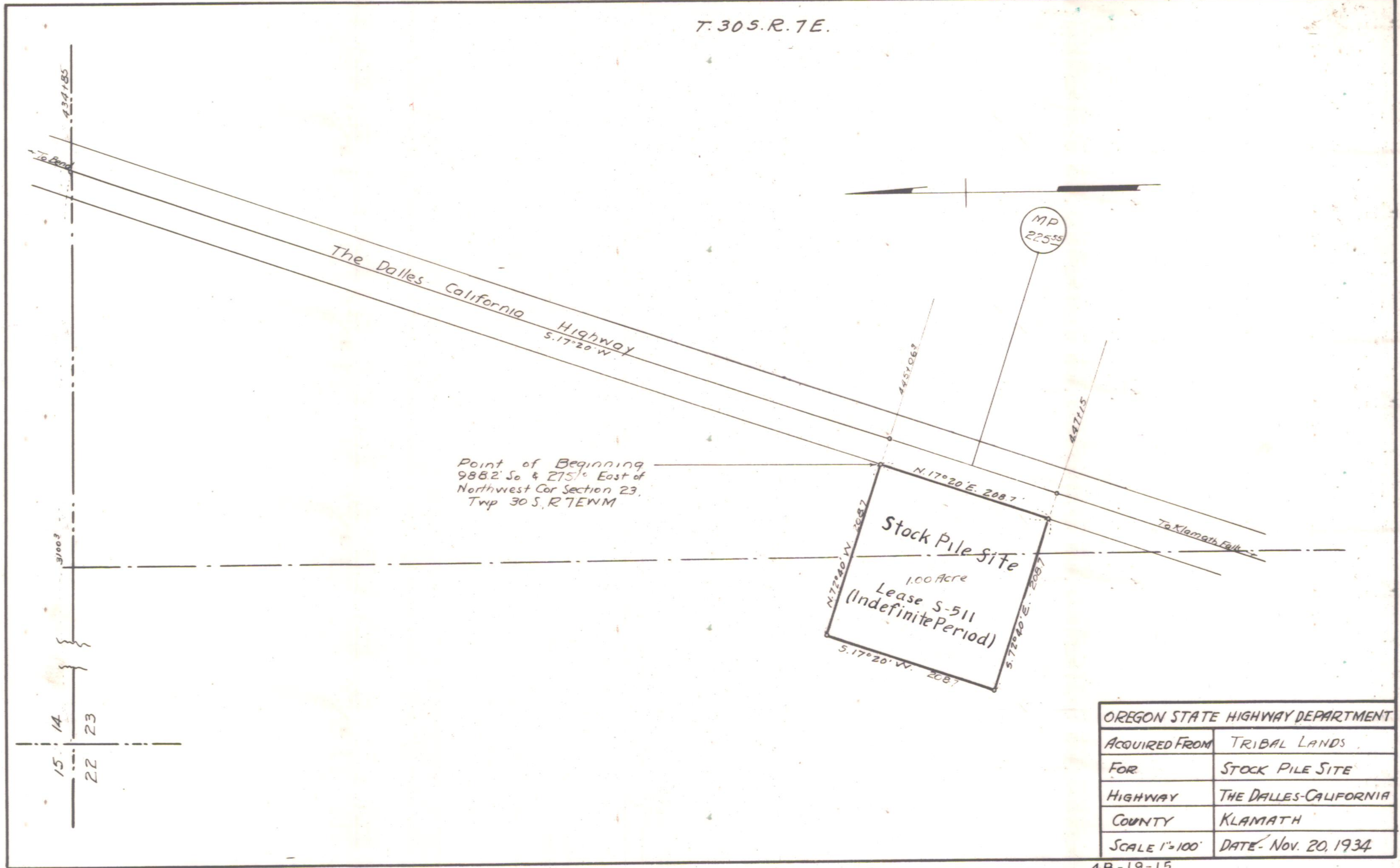


T. 30 S. R. 7 E.



OREGON STATE HIGHWAY DEPARTMENT	
ACQUIRED FROM	TRIBAL LANDS
FOR	STOCK PILE SITE
HIGHWAY	THE DALLES-CALIFORNIA
COUNTY	KLAMATH
SCALE 1"=100'	DATE - Nov. 20, 1934