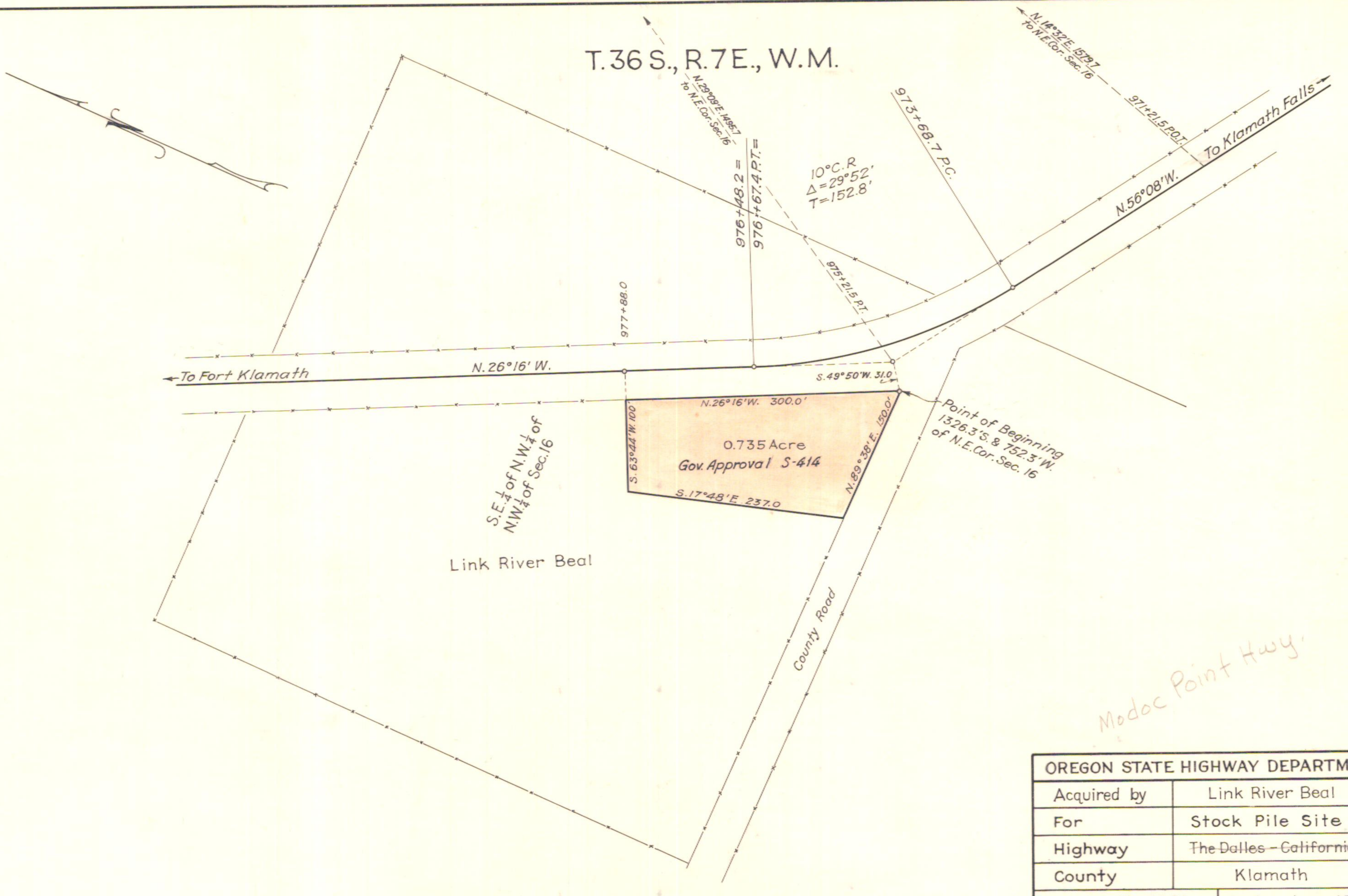


T.36 S., R.7 E., W.M.



S.E. 1/4 of N.W. 1/4 of
N.W. 1/4 of Sec. 16

Link River Beal

0.735 Acre
Gov. Approval S-414

County Road

Modoc Point Hwy.

| OREGON STATE HIGHWAY DEPARTMENT | |
|---------------------------------|-------------------------|
| Acquired by | Link River Beal |
| For | Stock Pile Site |
| Highway | The Dalles - California |
| County | Klamath |
| Scale: 1" = 100' | Date: June 1933 |

2B-5-12(400')