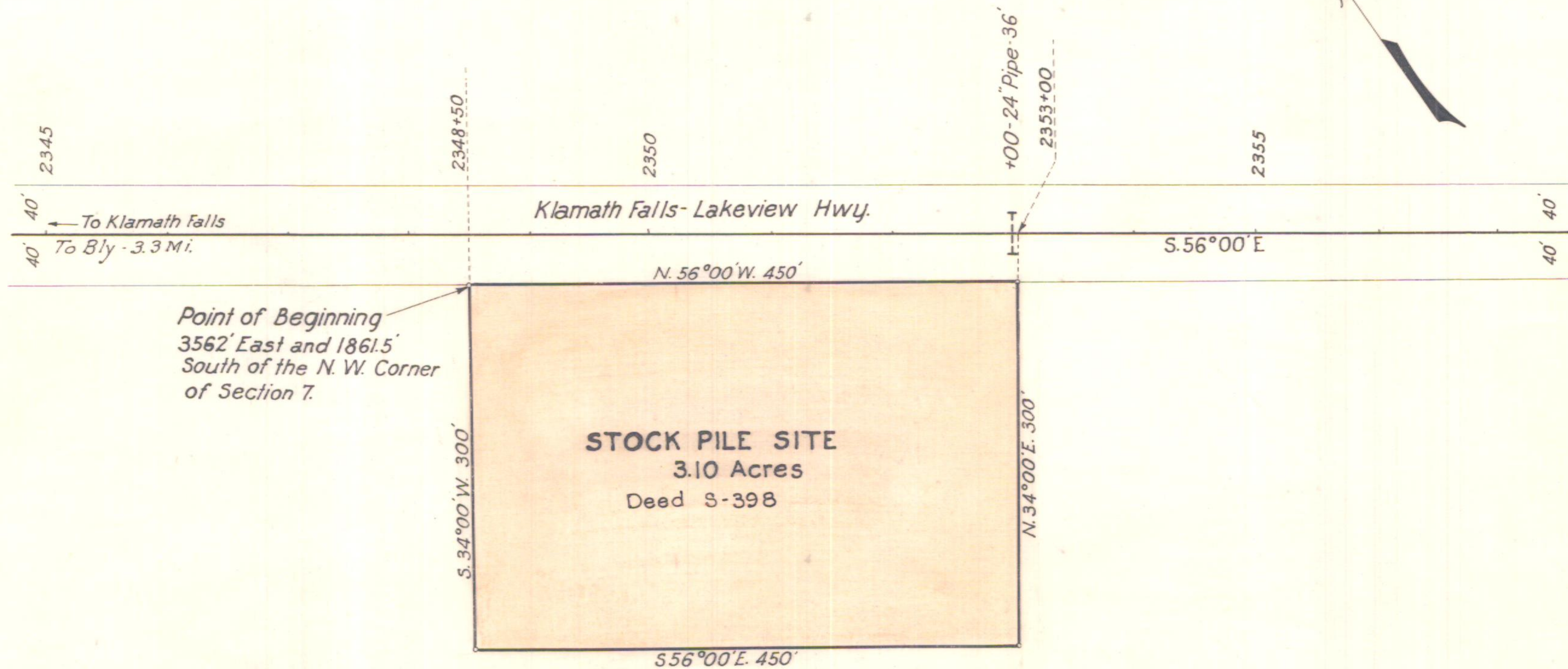


T. 37 S., R. 15 E. W. M.



Point of Beginning
3562' East and 1861.5'
South of the N. W. Corner
of Section 7.

S.W. $\frac{1}{4}$ - N.E. $\frac{1}{4}$ - Sec. 7

OREGON STATE HIGHWAY DEPARTMENT	
Acquired from	Klamath County
For	STOCK PILE SITE
Highway	Klamath Falls-Lakeview
County	Klamath
Scale 1"=100'	Date Sept. 23, 1933

1B-24-7