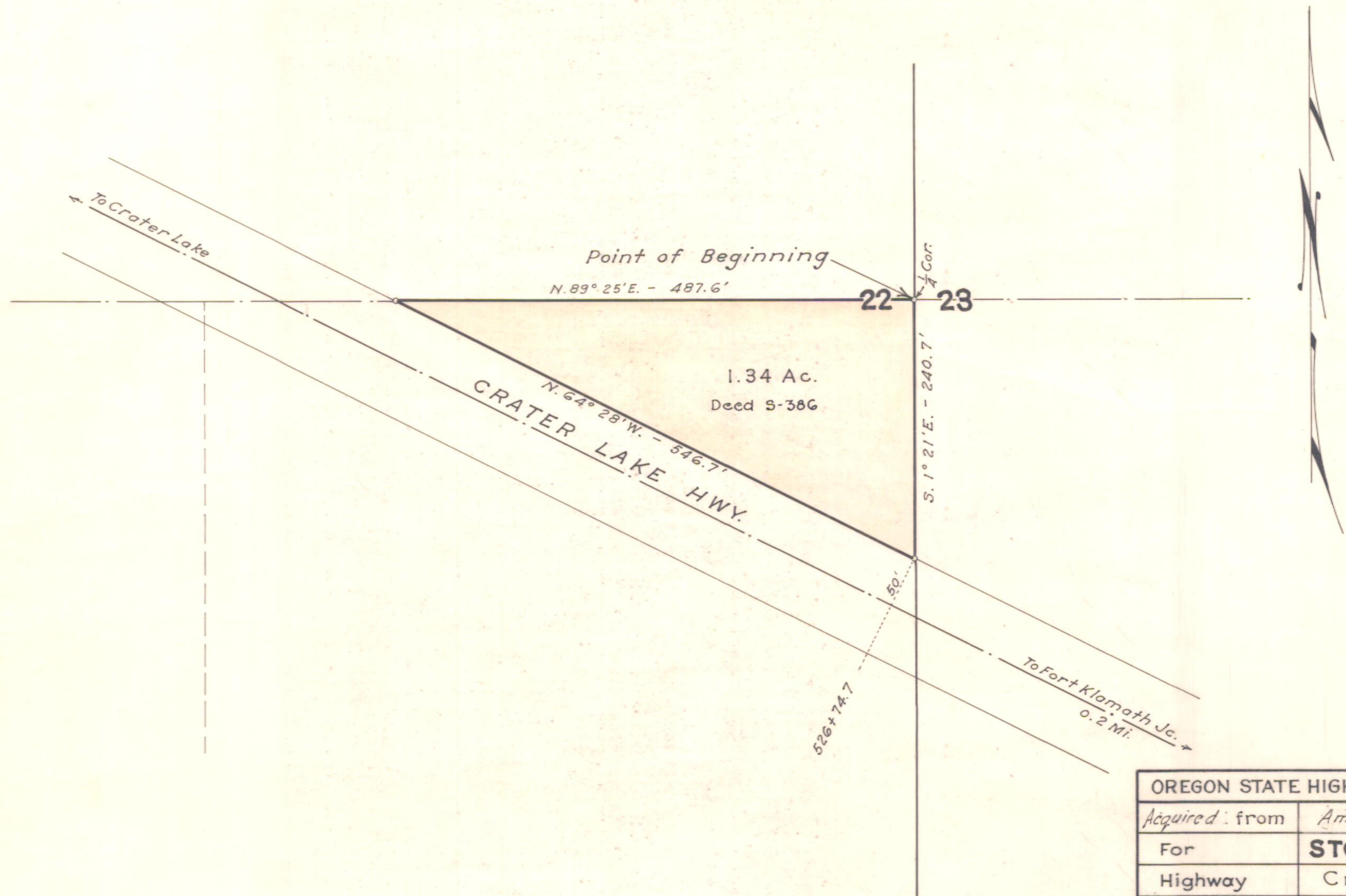


T. 33 S., R. 7 1/2 E., W.M.



OREGON STATE HIGHWAY DEPARTMENT	
Acquired from	Amy L. Zumbrunn
For	<b>STOCK PILE SITE</b>
Highway	Crater Lake
County	Klamath
Scale: 1" = 100'	Date: 4/25/33

⑦