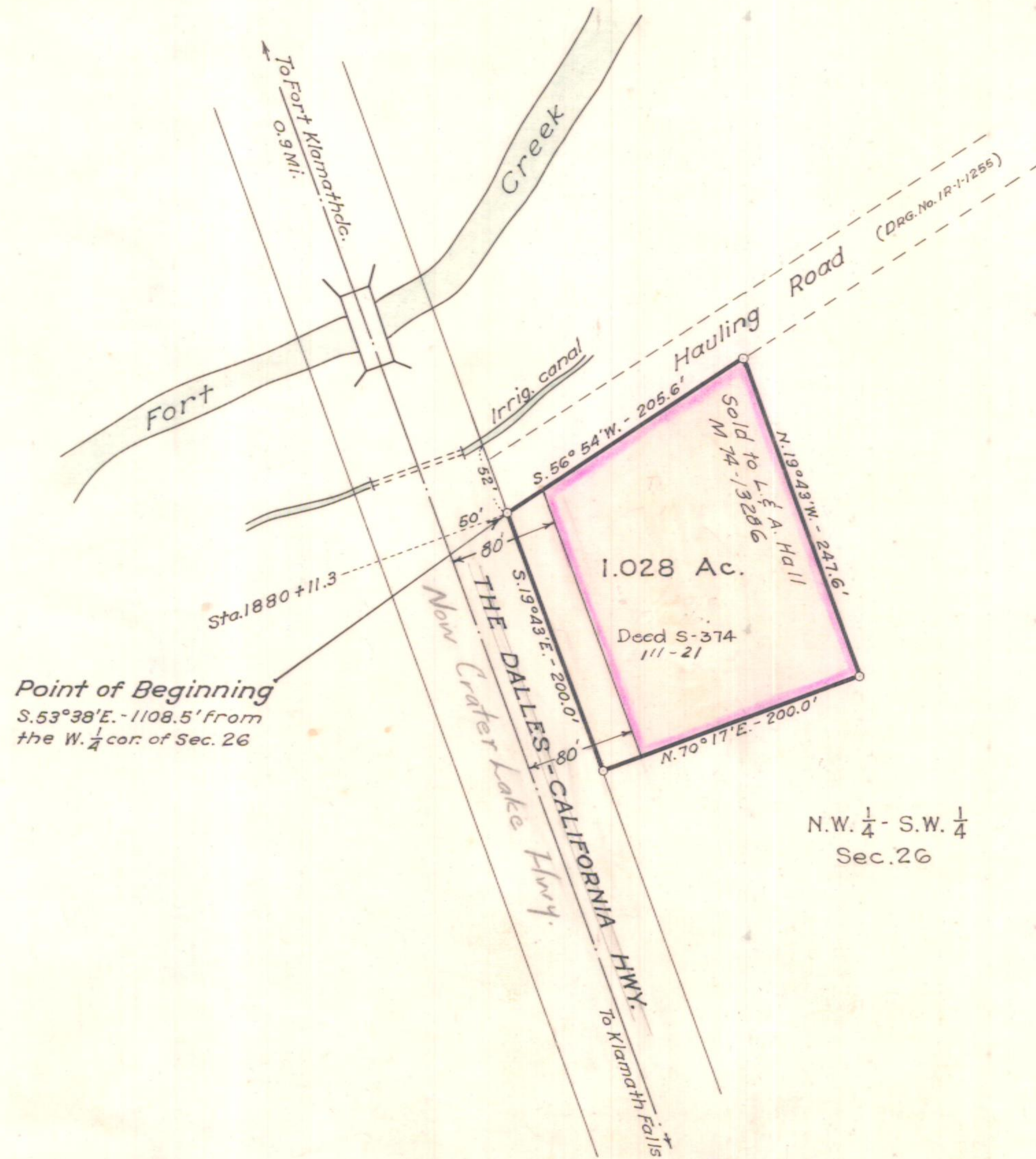


T.33S., R.7½E., W.M.



N.W. ¼ - S.W. ¼
Sec. 26

Lease expires April 29, 1938

OREGON STATE HIGHWAY DEPARTMENT	
Acquired from	Henry Grimes
For	STOCK PILE SITE
Highway	The Dalties - California - Crater Lake
County	Klamath
Scale: 1" = 100'	Date: May, 1933