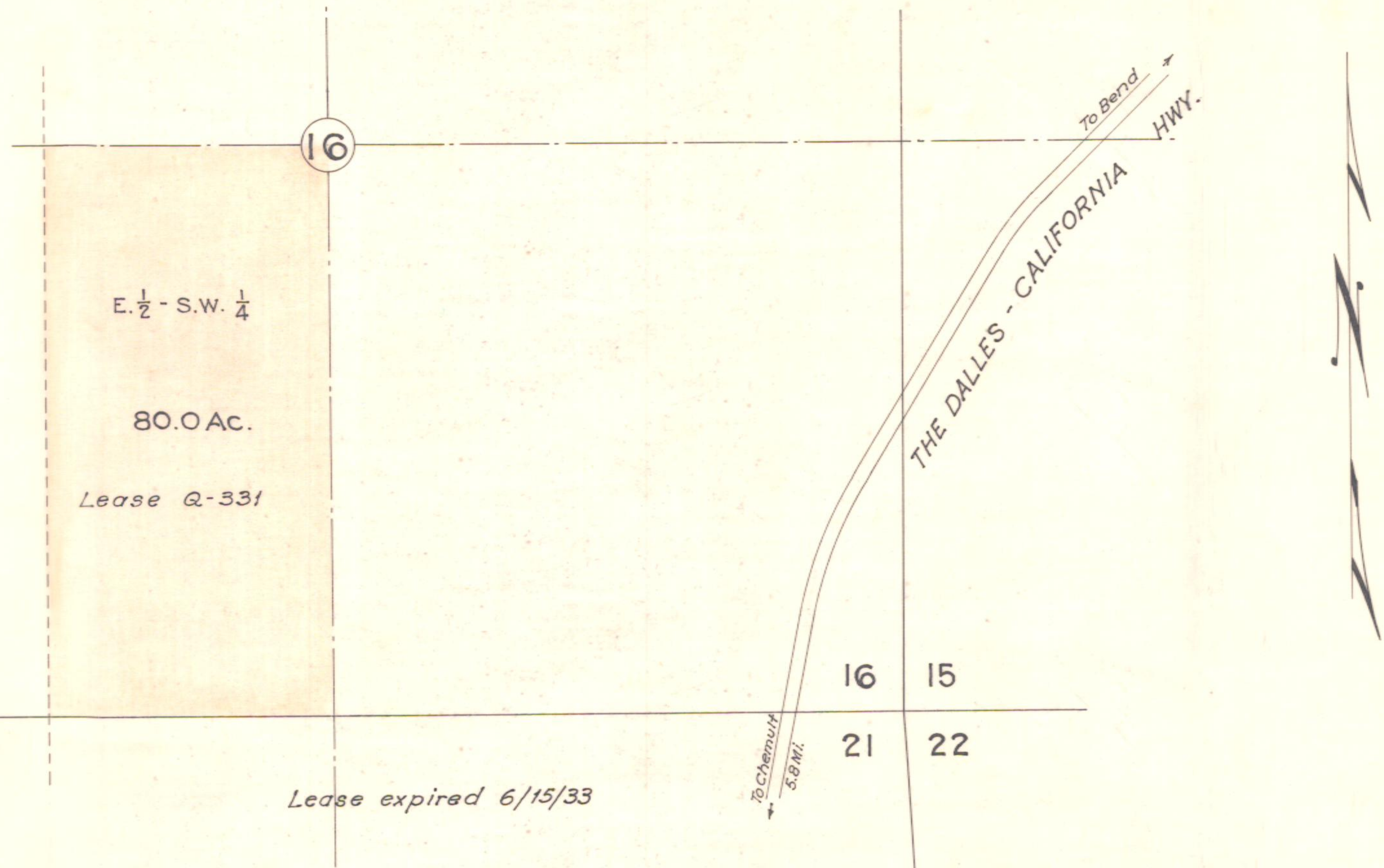


T.26 S., R.8E., W.M.



Lease Q-331

Lease expired 6/15/33

OREGON STATE HIGHWAY DEPARTMENT	
Leased from	Klamath Pine Lumber Co. (M.L. Johnson)
For	QUARRY SITE
Highway	The Dalles-California
County	Klamath
Scale: 1" = 600'	Date: April 1933