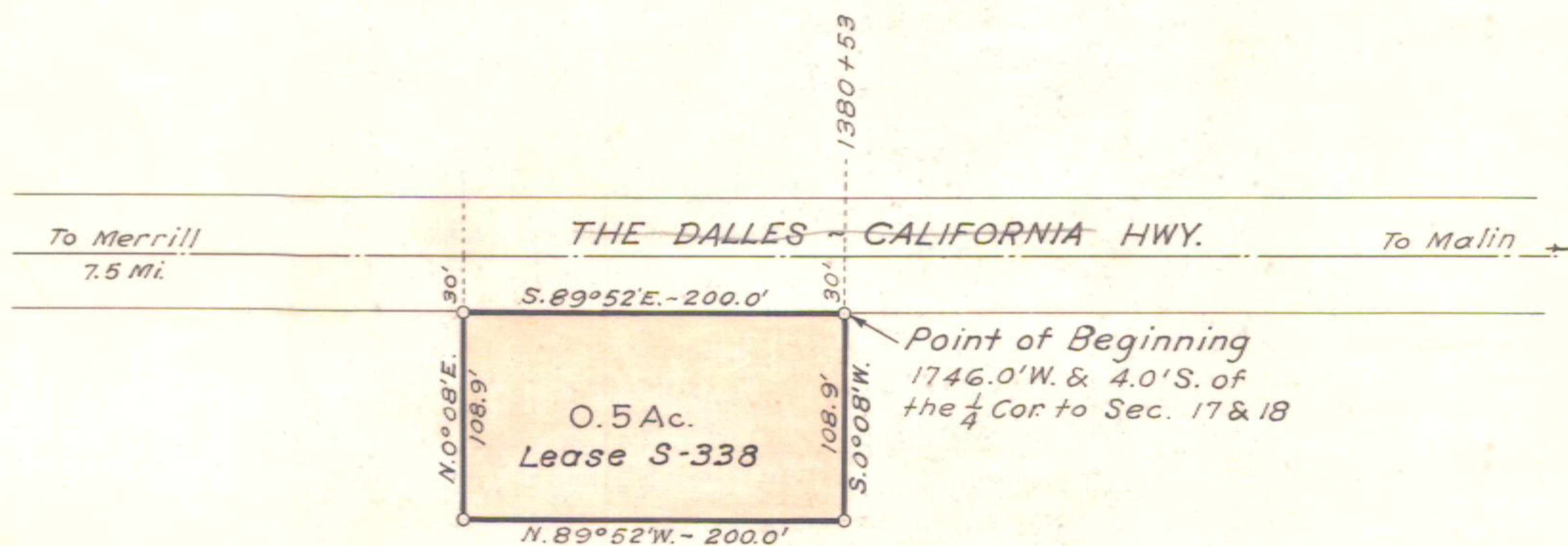


T. 41 S., R. 12 E., W. M.

N.W.  $\frac{1}{4}$  - S.E.  $\frac{1}{4}$  Sec. 18



*Klamath Falls-Malin Hwy.*

Expired 8-31-35  
Lease expires Aug. 31, 1935

OREGON STATE HIGHWAY DEPARTMENT	
Leased from	Charles A. Posvar
For	<b>STOCK PILE SITE</b>
Highway	<i>The Dalles-California</i>
County	Klamath
Scale 1"=100'	Date Sept, 1932