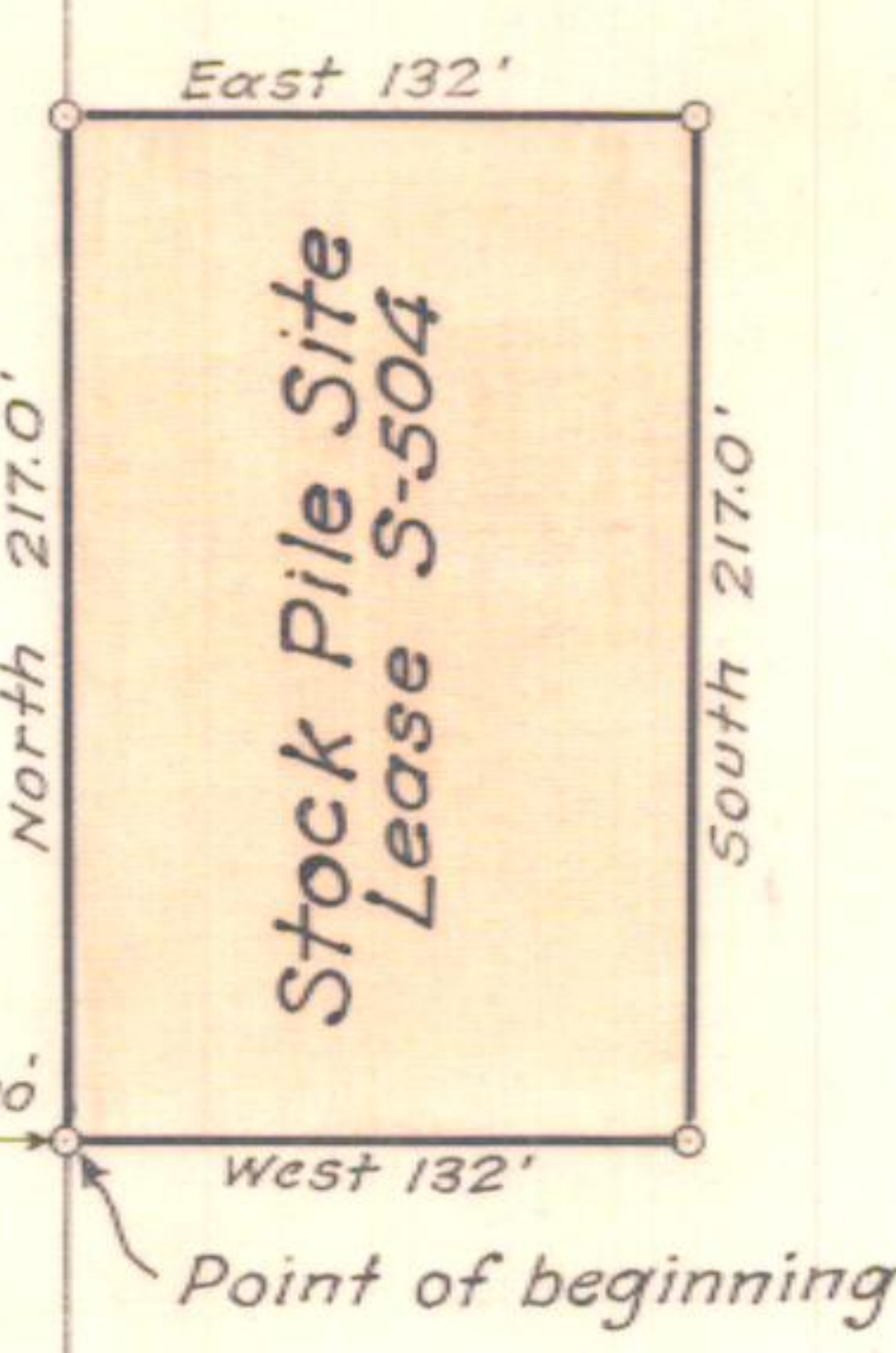
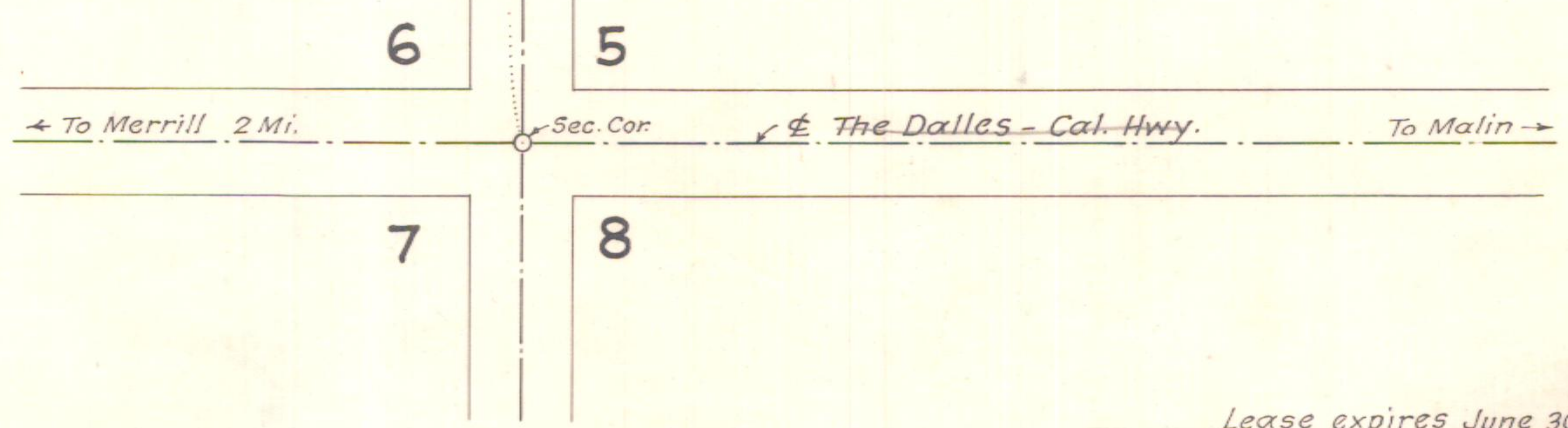


T. 41 S., R. 11 E. W.M.



Lease Expired 6/30/38

COUNTY ROAD
430.0'



Klamath Falls - Malin Hwy.

S-504

OREGON STATE HIGHWAY DEPARTMENT	
Leased from	Mamie E. Giacomini
For	STOCK PILE SITE
Highway	<i>The Dalles-California</i>
County	Klamath
Scale 1" = 100'	Date July, 1932

Lease expires June 30, ¹⁹³⁸1935.

2 (6)