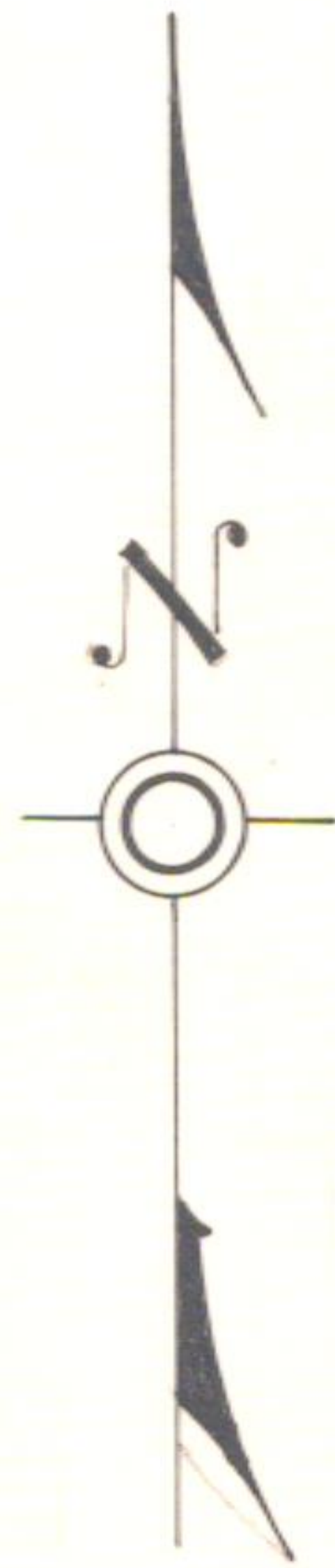


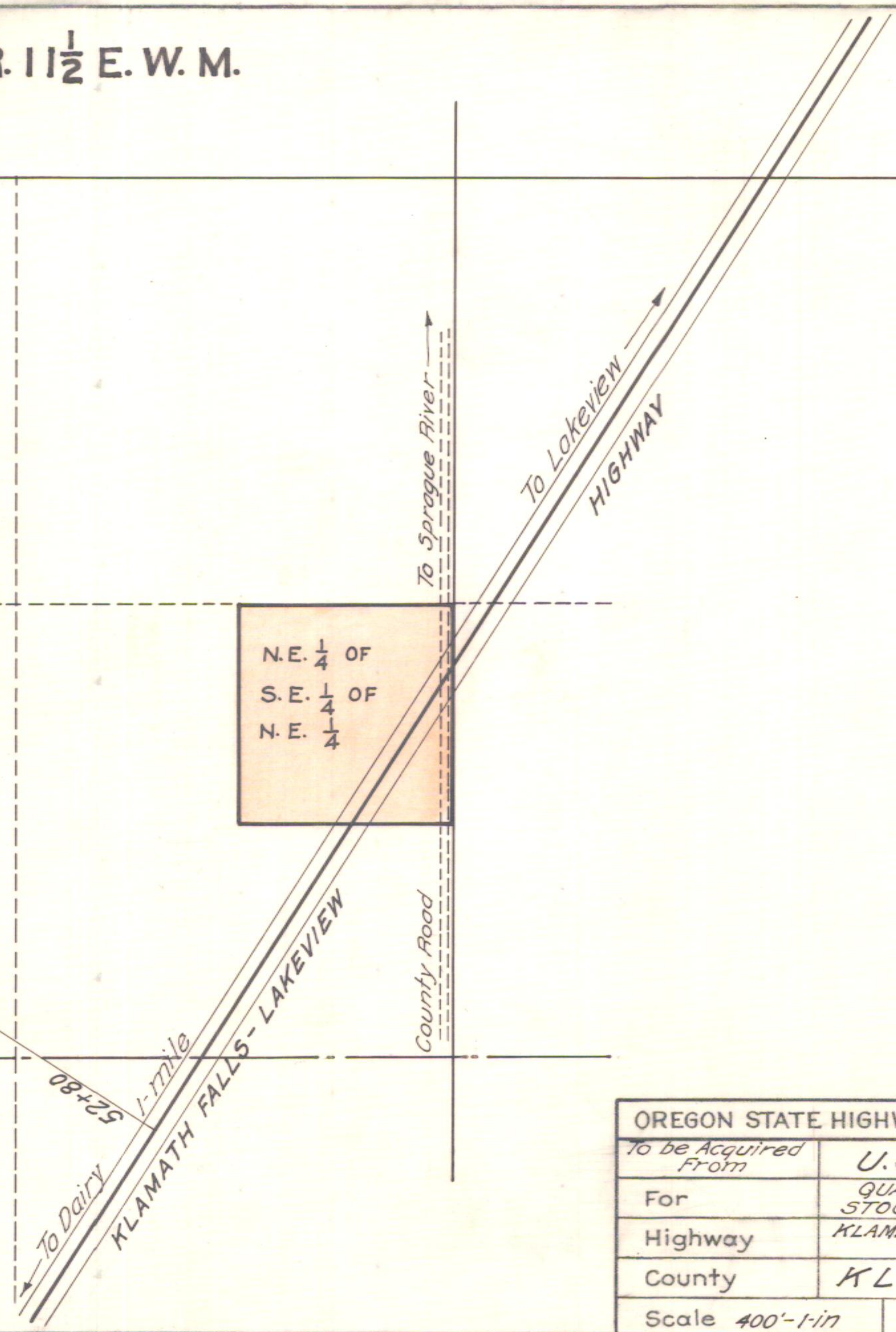
T. 38 S. R. 11 1/2 E. W. M.



27



N.E. 1/4 OF  
S.E. 1/4 OF  
N.E. 1/4



OREGON STATE HIGHWAY DEPARTMENT	
To be Acquired From	U.S. GOV'T.
For	QUARRY SITE and STOCK PILE SITE
Highway	KLAMATH FALLS-LAKEVIEW HIGHWAY
County	KLAMATH
Scale 400'-1/in	Date 1-5-1931

*me*