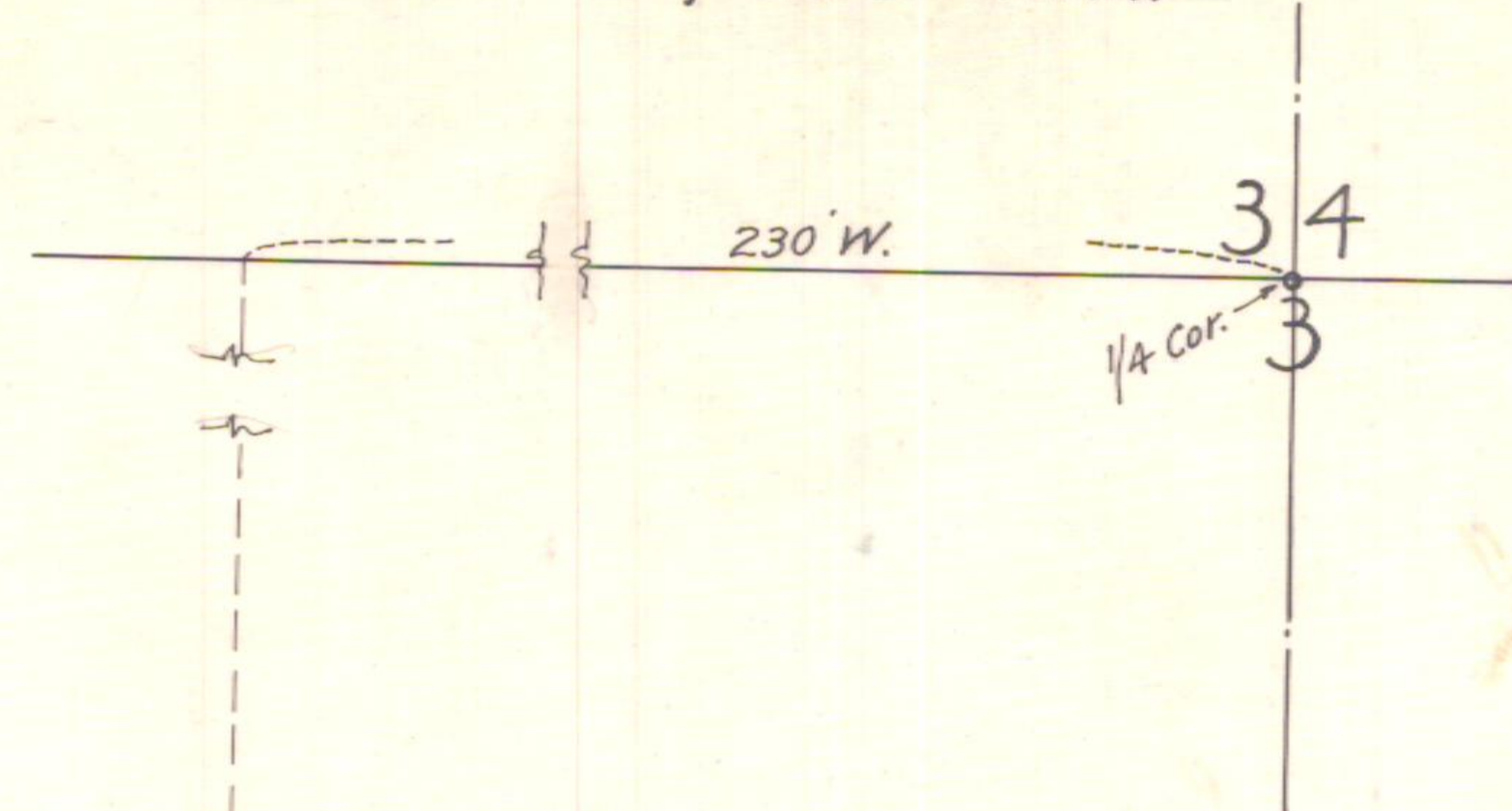
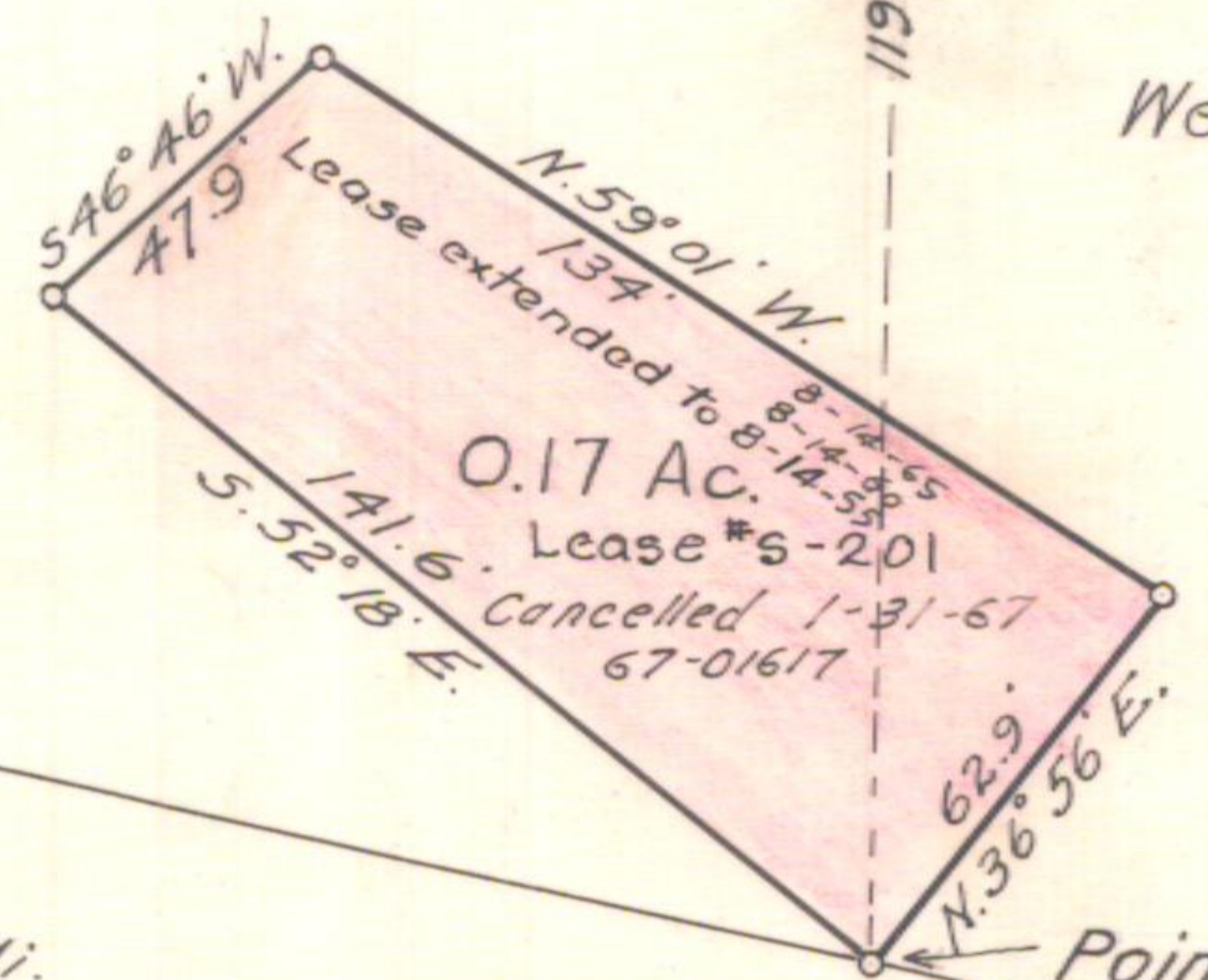


T. 40S., R. 5E. W.M.



Lot 3

Weyerhaeuser Timber Co.



← To Pinehurst 8 Mi.

Point of Beginning

GREEN SPRINGS HIGHWAY

To Keno →

Lease extended to Aug. 14, 1960-1965
 Lease extended to Aug. 14, 1945-1950-1955
 Lease expires Aug. 14, 1940

OREGON STATE HIGHWAY DEPARTMENT	
Leased From	Weyerhaeuser Timber Co
For	STOCK PILE SITE
Highway	Green Springs
County	Klamath
Scale 1" = 50'	Date Sept. 1930