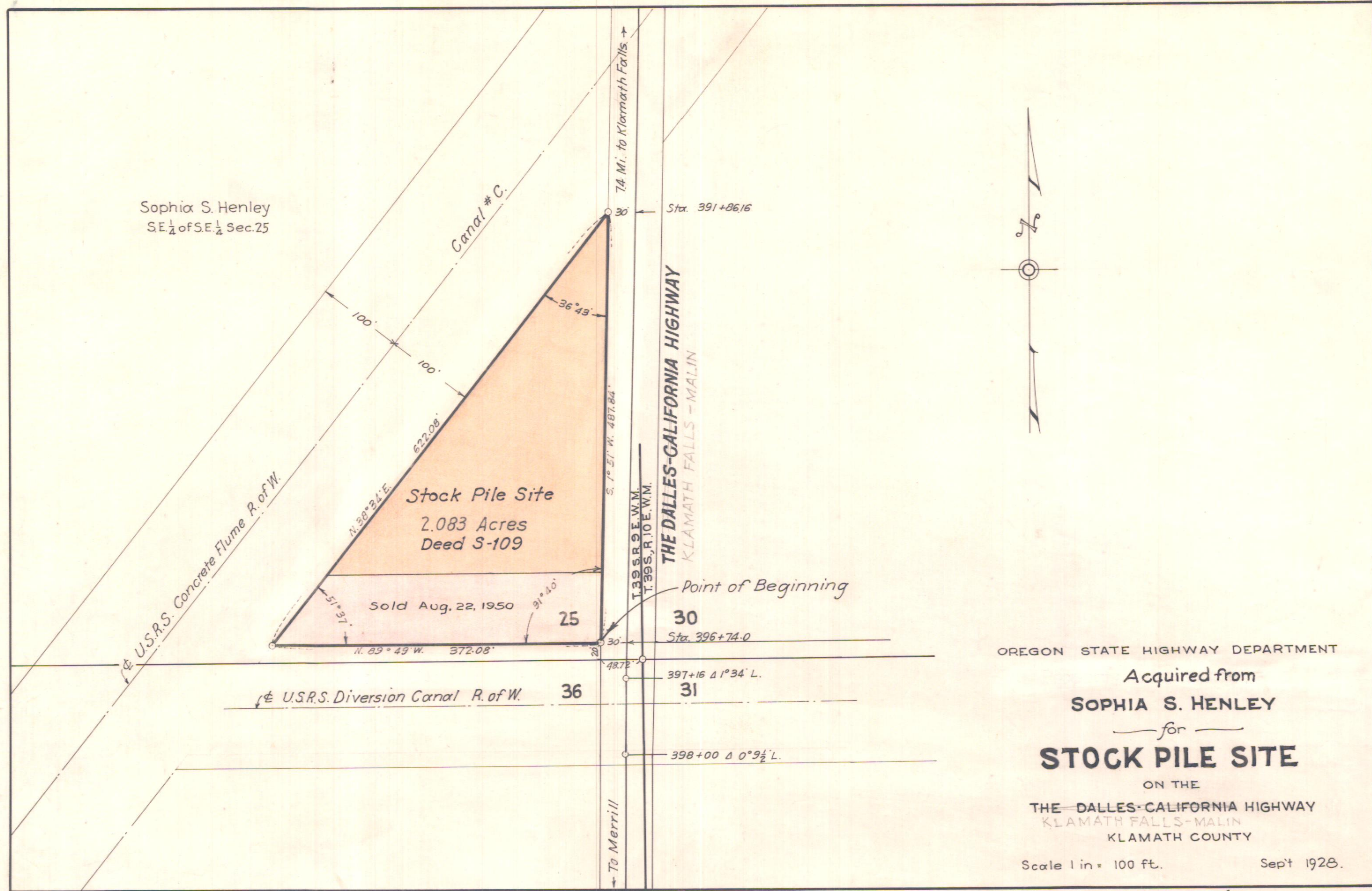


3 B 4-7



OREGON STATE HIGHWAY DEPARTMENT

Acquired from
SOPHIA S. HENLEY
for
STOCK PILE SITE
ON THE
THE DALLES-CALIFORNIA HIGHWAY
KLAMATH FALLS-MALIN
KLAMATH COUNTY

Scale 1 in = 100 ft. Sept 1928.