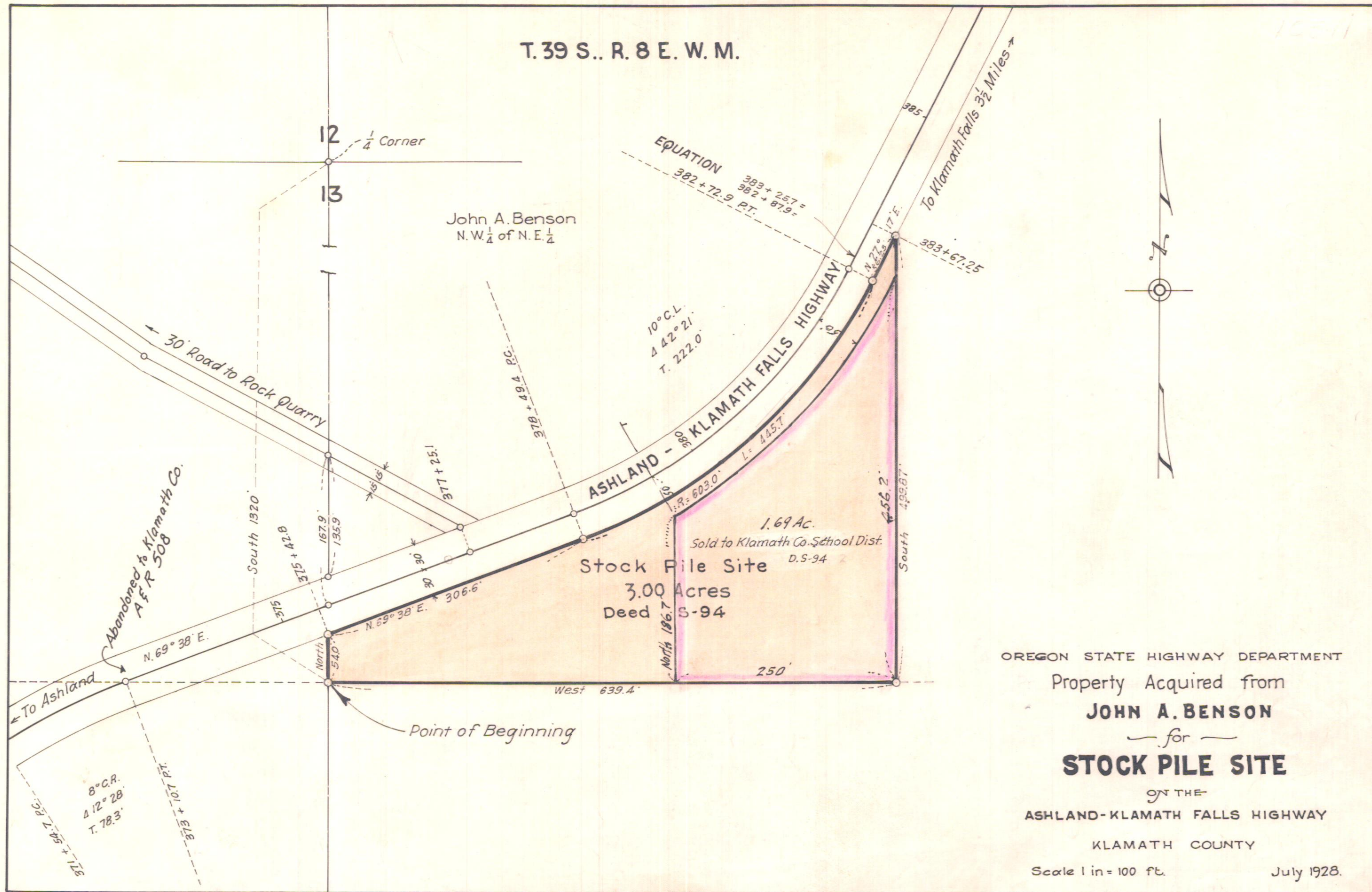


10511

T. 39 S.. R. 8 E. W. M.



OREGON STATE HIGHWAY DEPARTMENT
 Property Acquired from
JOHN A. BENSON
 — for —
STOCK PILE SITE
 ON THE
 ASHLAND-KLAMATH FALLS HIGHWAY
 KLAMATH COUNTY

Scale 1 in = 100 ft. July 1928.

LB 13-4

108-17-36

1B-23-4(400)
98-7-18

63-20

4