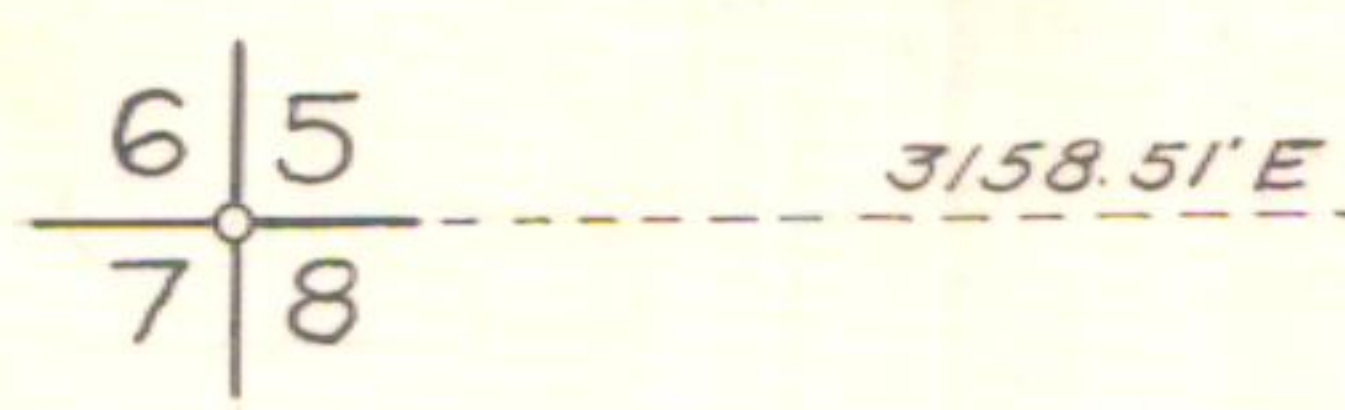
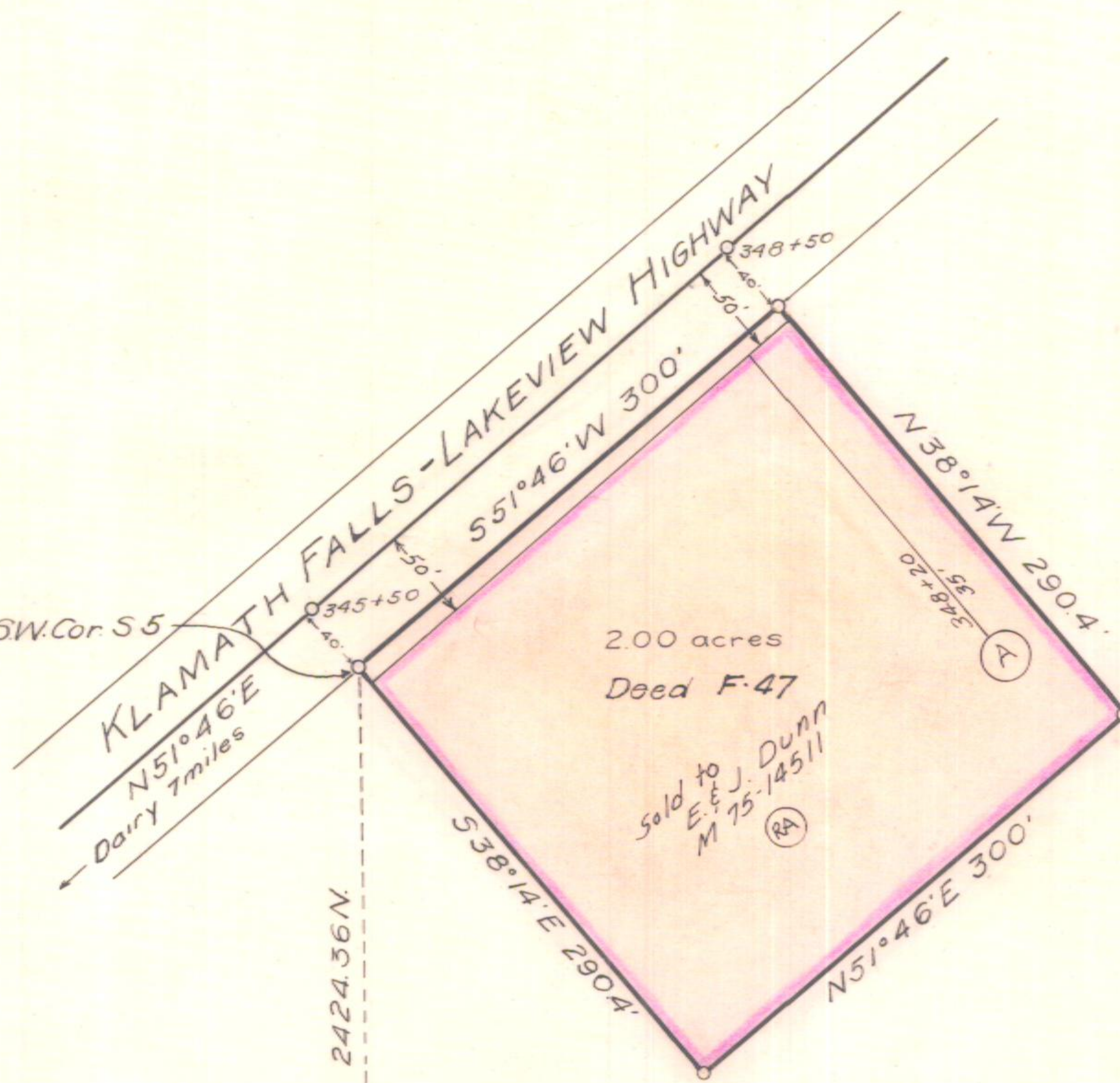
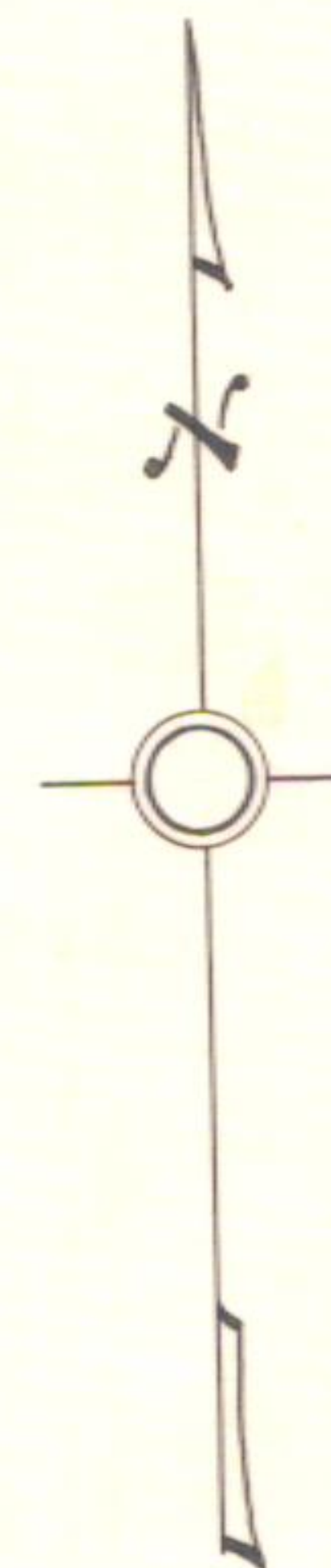


Point of Beginning
 2424.36' N. and 3158.51' E. of SW. Cor. S 5



SW 1/4 of NE 1/4 and NW 1/4 of SE 1/4
 Sec. 5, T. 38 S., R. 11 E., W.M.



OREGON STATE HIGHWAY DEPARTMENT	
acquired	from George Ritter
For	FILLER PIT
Highway	Klamath Falls-Lakeview
County	Klamath
Scale 1 in. = 100 ft.	Date April 1930

18-19-18
 28-20-15

132-213