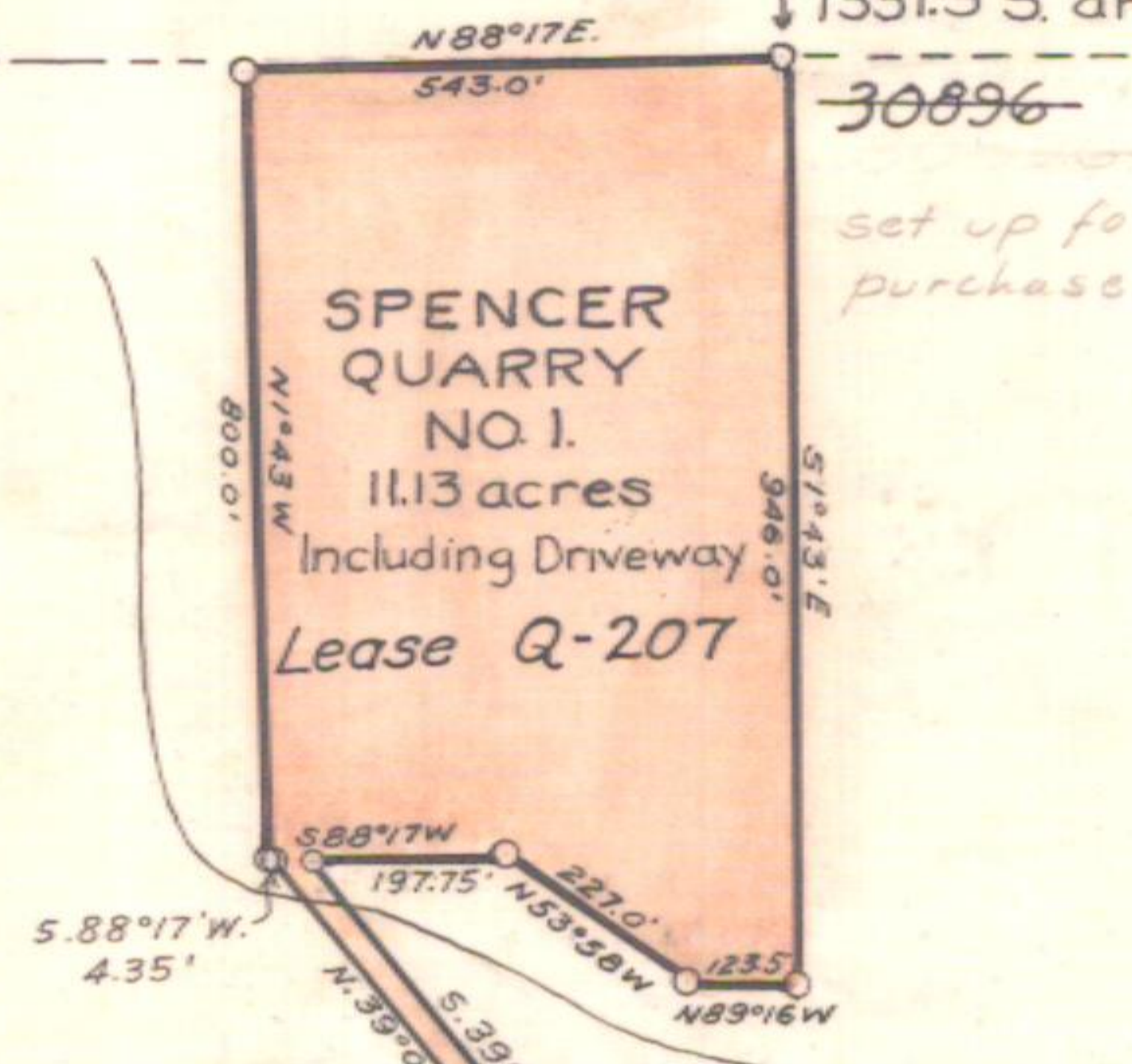


T.40S.,R.6E.,W.M.

Point of Beginning  
1351.3'S. and 4121'W. of N¼ Sec. 1.



~~30896~~  
Cancelled  
set up for purchase  
7-6-60

GREEN SPRINGS HIGHWAY

Maint. Hdq. Site  
(See special Drawing)  
IRI-333

M.P. 41.33



Expired April 20th, 1960

OREGON STATE HIGHWAY DEPARTMENT	
Leased from	W.B. Spencer <sup>M.A. Coffman</sup>
For	QUARRY SITE
Highway	Green Springs
County	Klamath
Scale 1 in = 400 ft.	Date April 1930