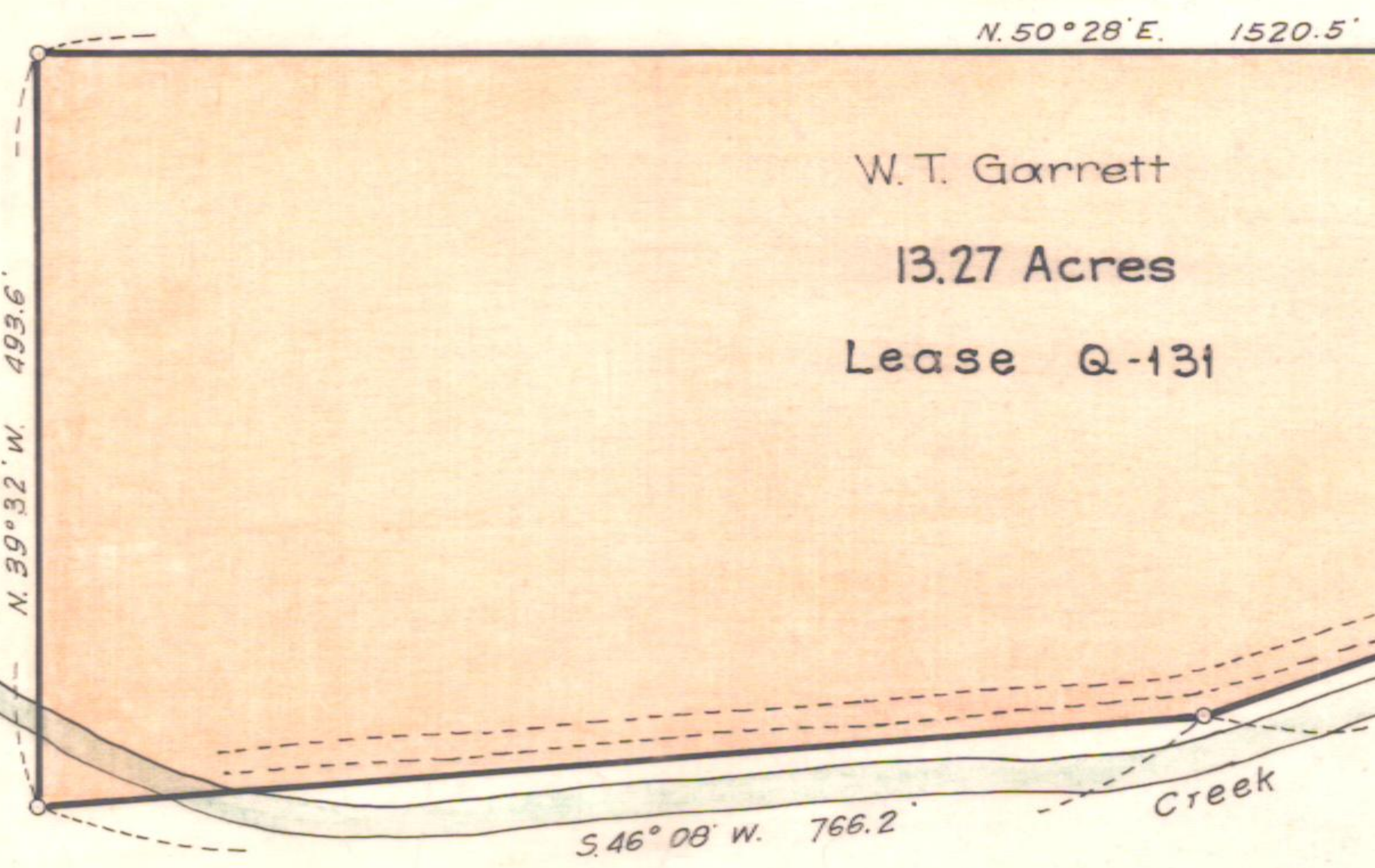
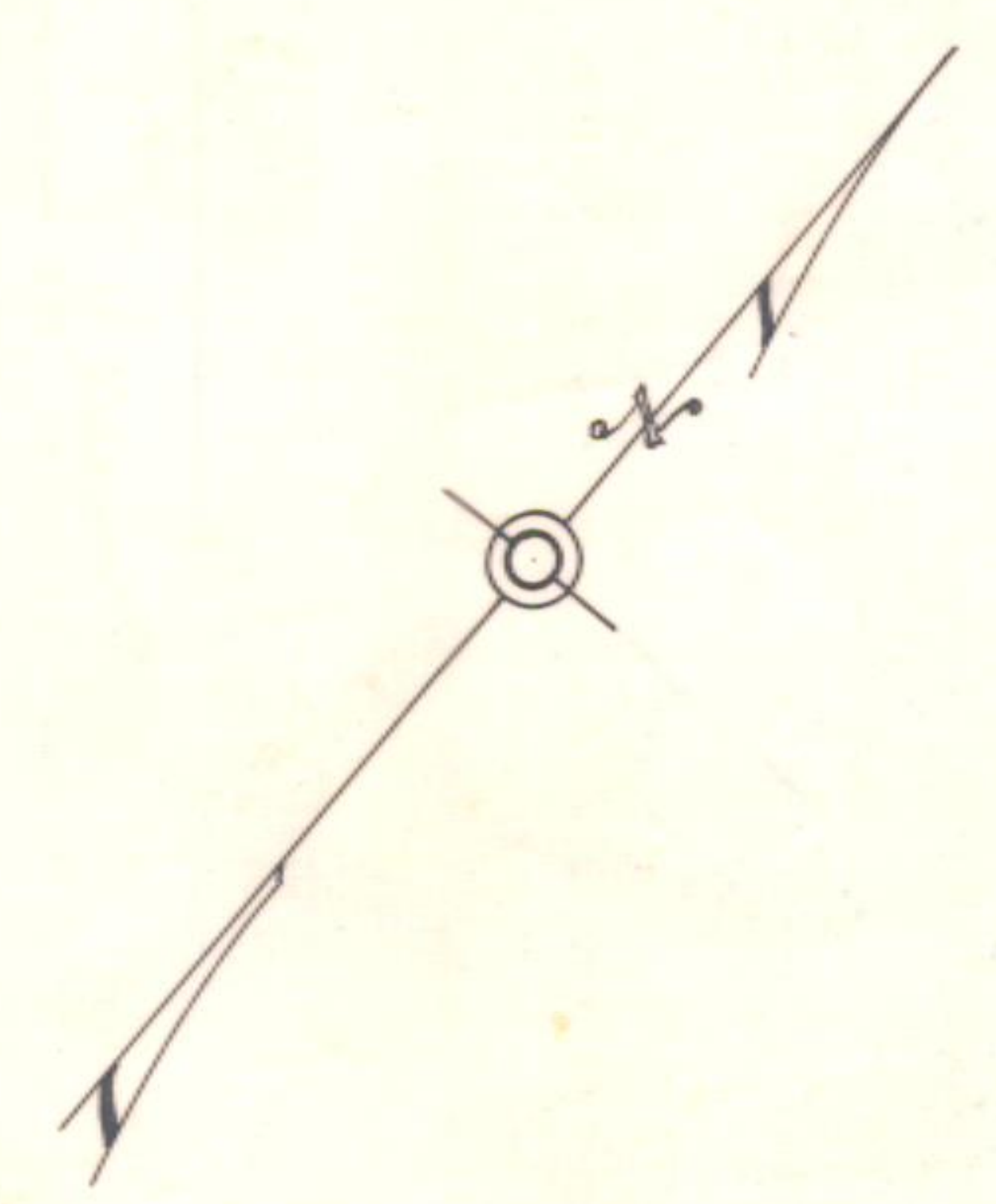


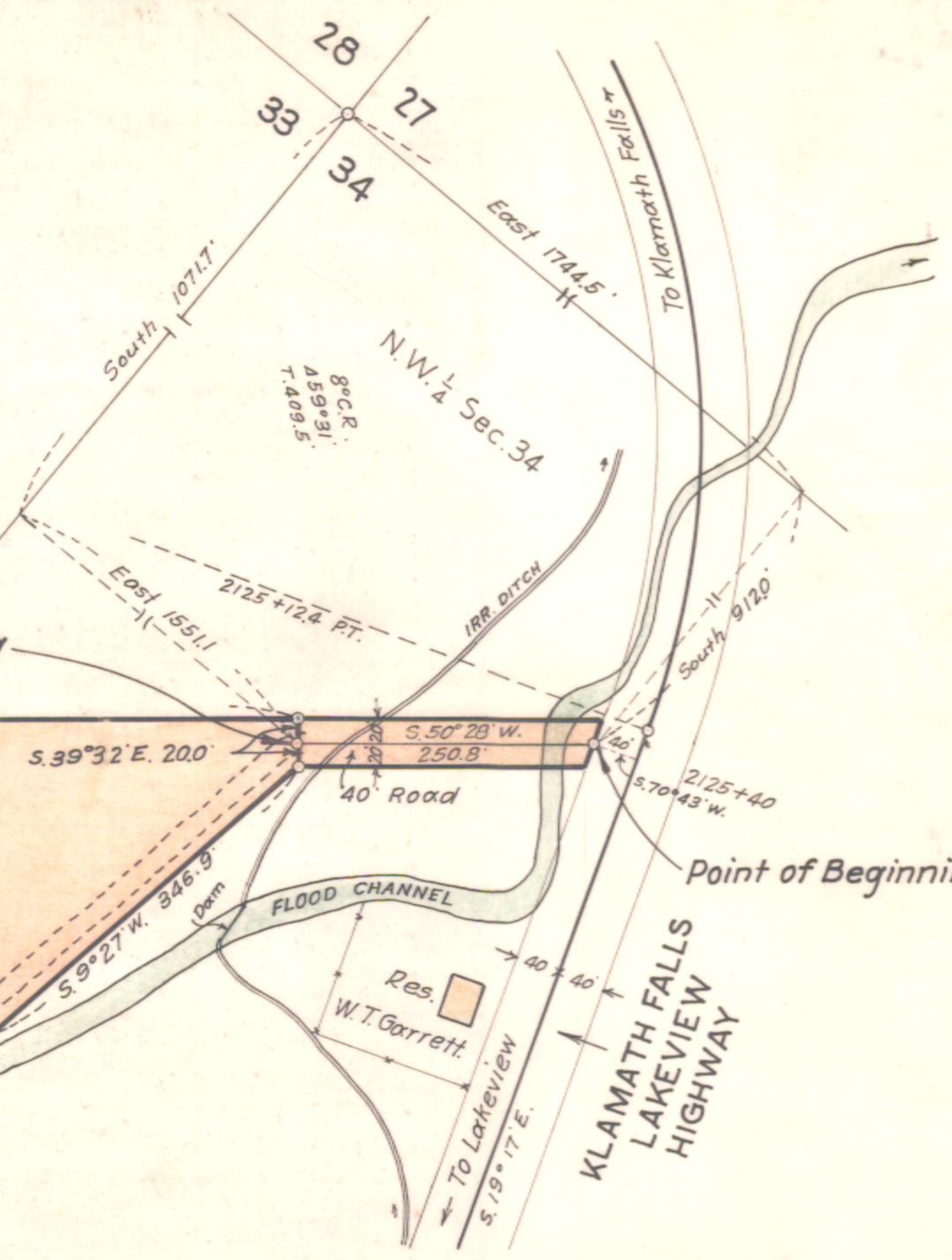
T. 36 S., R. 14 E. W. M.



W.T. Garrett
 13.27 Acres
 Lease Q-131

Point of Beginning

Point of Beginning



OREGON STATE HIGHWAY DEPARTMENT
 Twenty-year Lease Acquired from
W.T. GARRETT
 - for -
QUARRY SITE
 OF THE
 KLAMATH FALLS-LAKEVIEW HIGHWAY
 KLAMATH COUNTY

Lease Expires ^d Mar. 31, 1948.

Scale 1 in = 150 ft.

Feb. 1928.

1B-14-12(400')

62-99