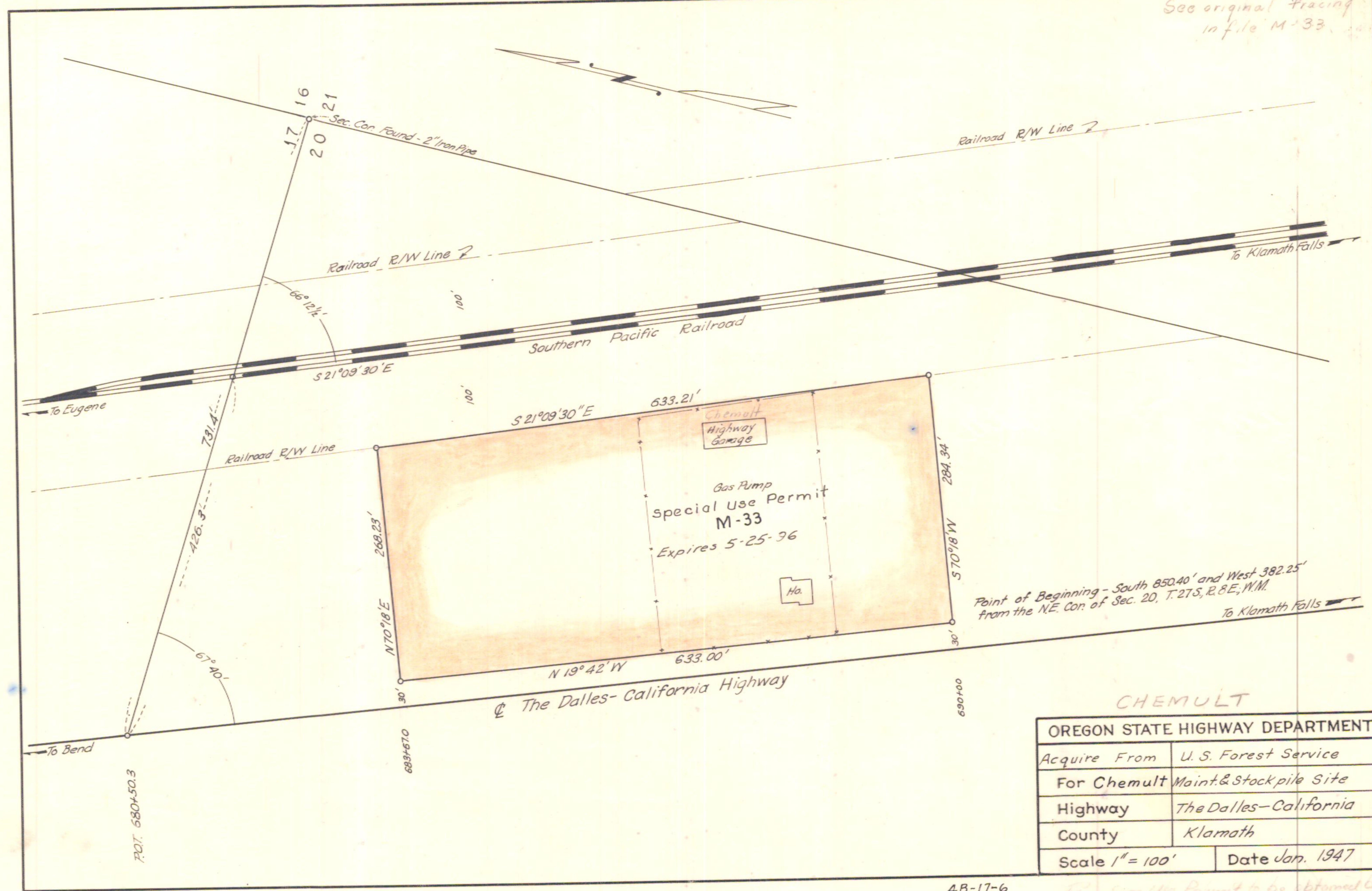


See original tracing in file M-33



CHEMULT

OREGON STATE HIGHWAY DEPARTMENT	
Acquire From	U. S. Forest Service
For Chemult	Maint. & Stockpile Site
Highway	The Dalles-California
County	Klamath
Scale 1" = 100'	Date Jan. 1947

4B-17-6

Rec. Spec Use Permit to be obtained by WCC