

## What is the AQI?

The AQI (Air Quality Index) is a measure of the air quality. The index tells you how clean or polluted your air is, and what associated health effects might be a concern for you.

Think of the AQI as a yardstick that runs from 0 to 500. The higher the AQI value, the greater the level of air pollution and health concern for residents. For example, an AQI value of 50 represents moderate air quality with a potential to affect public health, while an AQI value over 100 represents hazardous air quality.

Below is the color chart the EPA has designed to explain all levels of Air Quality.

(Klamath County uses a more simplified 3 color system for its advisories)

<b>Air Quality Index (AQI) Values</b>	<b>Levels of Health Concern</b>	<b>Colors</b>
When the AQI is in this range:	...air quality conditions are:	...as symbolized by this color:
0 to 50	Good	Green
51 to 100	Moderate	Yellow
101 to 150	Unhealthy for Sensitive Groups	Orange
151 to 200	Unhealthy	Red
201 to 300	Very Unhealthy	Purple
301 to 500	Hazardous	Maroon

When AQI values are above 100, air quality is considered to be unhealthy. Sensitive groups such as children, elderly and those with health serious conditions are adversely affected by a rising index.

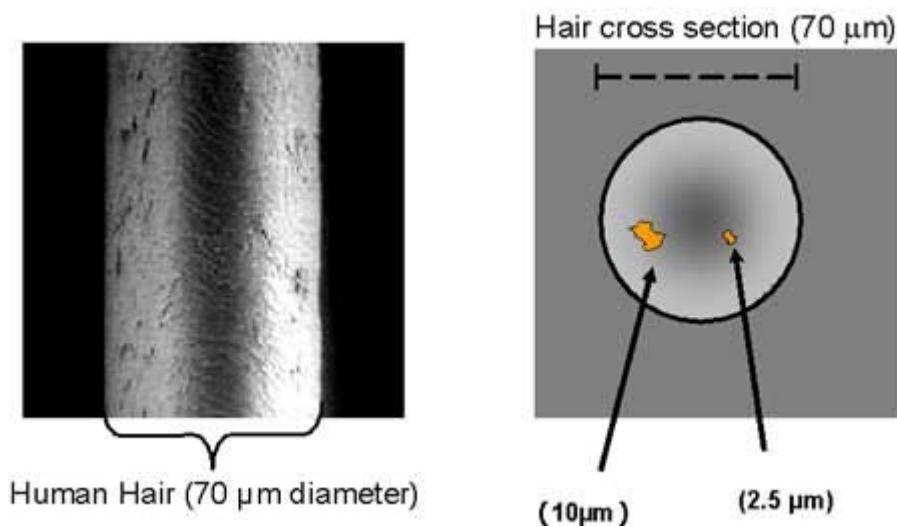
## How is the AQI measured?

Particles come in a wide range of sizes. Ten micrometers is smaller than the width of a single human hair. The EPA now uses a 2.5 micrometer standard for its regulations. Those less than 10 micrometers in diameter are so small that they can get into the lungs, potentially causing serious health problems.

### 2.5 Micron Particles

Particles less than 2.5 micrometers in diameter are called "fine" particles. These particles are so small they can be detected only with an electron microscope. Sources of fine particles include all types of combustion, including motor vehicles, power plants, residential wood burning, forest fires, agricultural burning, and some industrial processes.

Below is a graphic to give you an idea of how small a 2.5 micron particle is.



Developed from the EPA and Oregon State DEQ websites, for the Klamath County Department of Public Health.

