

WINEMA

19 20
30 29

20 21
29 28

21 22
28 27

22 23
27 26

UPPER KLAMATH

NATIONAL

WILDLIFE REFUGE

NATIONAL

30 29
31 32

29 28
32 33

28 27
33 34

27 26
34 35

30 29
31 32

29 28
32 32

FOREST

UPPER

KLAMATH

LAKE

31 32
6 5

32 33
5 4

33 34
4 3

34 35
3 2

36 31
1 6

36 31
1 6

36 31
1 6

UPPER KLAMATH

Pelican Bay

NATIONAL

WILDLIFE

REFUGE

WINEMA

6 5
7 8

5 4
8 9

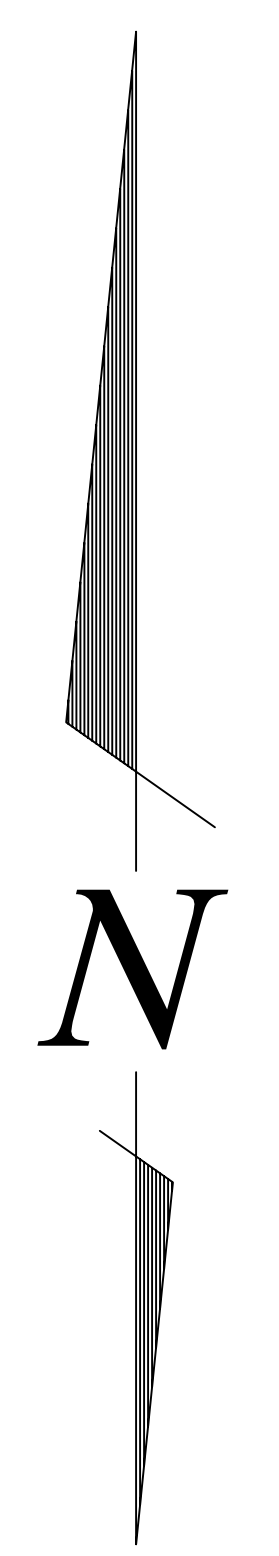
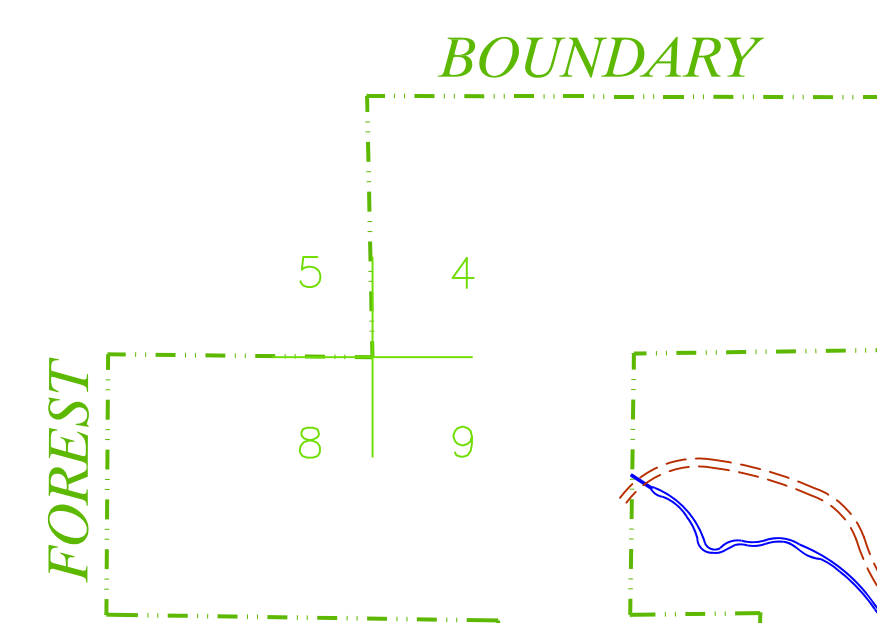
4 3
9 10

3 2
10 11

12 7
13 18

12 7
13 18

12 7
13 18



ROCKY POINT

SCALE 1" = 1000'
MAY 2003

REVISED :
NOVEMBER 2003
NOVEMBER 2004
DECEMBER 2005

NATIONAL

FOREST

ODESSA SUMMER HOME SITES

FOX HOLLOW

UPPER

NATIONAL

UPPER

NATIONAL

WINEMA

ARROWHEAD

ROCKY POINT

WESTSIDE

ROCKY POINT

ROCKY POINT

ROCKY POINT

ROCKY POINT

ROCKY POINT

ROCKY POINT



PREPARED BY: KLAMATH COUNTY DEPARTMENT OF PUBLIC WORKS.
THIS MAP HAS BEEN PREPARED FOR INTERNAL USE BY THE DEPARTMENT OF PUBLIC WORKS ONLY. ACCURACY OR COMPLETENESS IS NOT GUARANTEED TO ANY OTHER PUBLIC AGENCY OR PRIVATE PARTY.